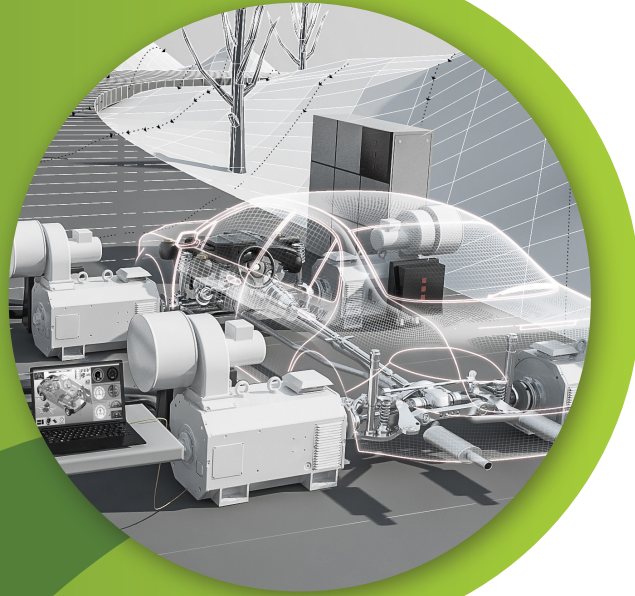


TESTING

Testing generates substantial amount of data. To gain insights from it, it is crucial to have access to a top level data analysis tool such as UniPlot.

It deals with a wide range of file format and database and offers a comprehensive suite of analytical tools for informed decision-making.



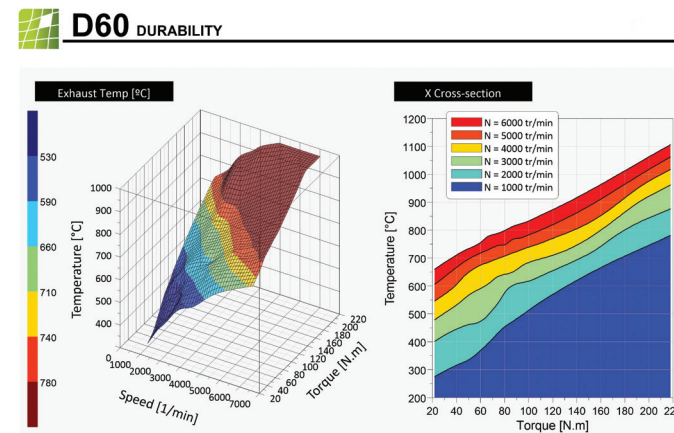
Import your data

UNIPILOT™ supports a wide range of file format and database. Test it !



Create templates

Plot your data selecting from numerous options of plot types (1D, 2D, 3D, waterfall, polar...). Tune your graph changing colors, styles, markers and more.



Analyze your data

Cursors, filters and tools help you make the most out of your data. Create FFTs, integrals, 3D classification and much more. Also add conditional formatting to your reports to get meaningful information on your results.



Export

The power of UNIPILOT is its capacity to export customizable reports in multiple format, to facilitate the decision process.

Make the decision...

ENORISE
Simulate, Automate, Qualify



Are you interested in innovative, pioneering software solutions?

Contact us!

ENORISE
<https://www.enorise.com> | contact@enorise.com



ENORISE
Simulate, Automate, Qualify

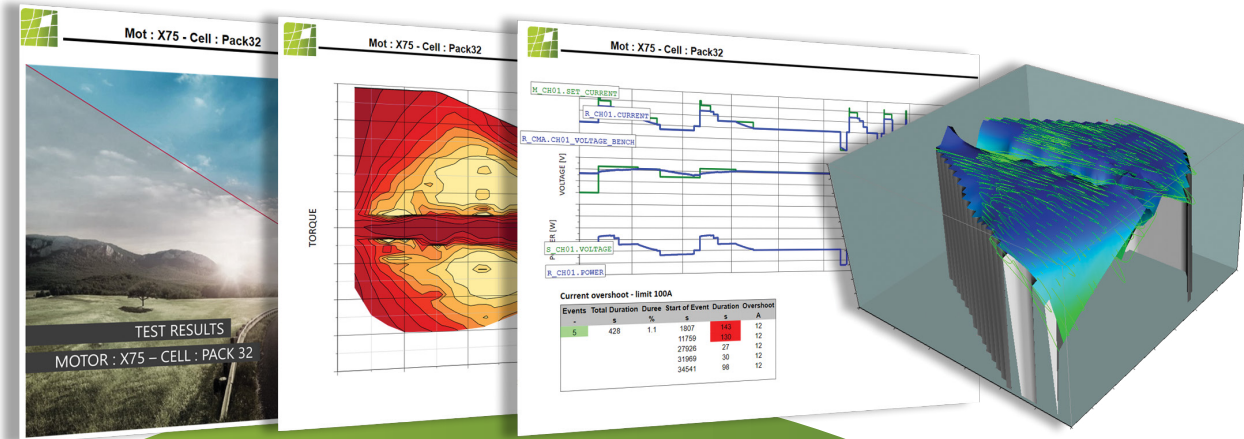


Visualize and analyze all your data
Create powerful reports





Create customizable reports for all your data



With UNIPILOT™, become more than an innovator!

Data is crucial in all organization independent from the domain of activities. The amount of data produced today is more than ever and it even increases day by day. Analysis, visualization, efficient use and data driven decisions all require powerful software. UniPlot's interface helps navigate through your data and visualize it, its scripting module provides countless possibilities to analyze and transform it. Finally, its wide range of customization options let you produce professional reports with style !



Follow us on social media

The challenge:

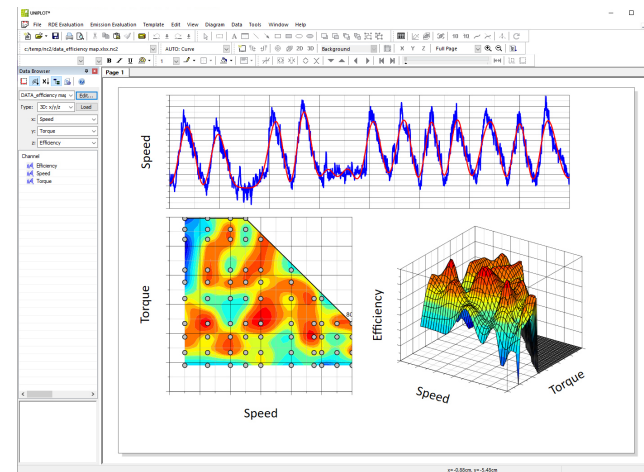
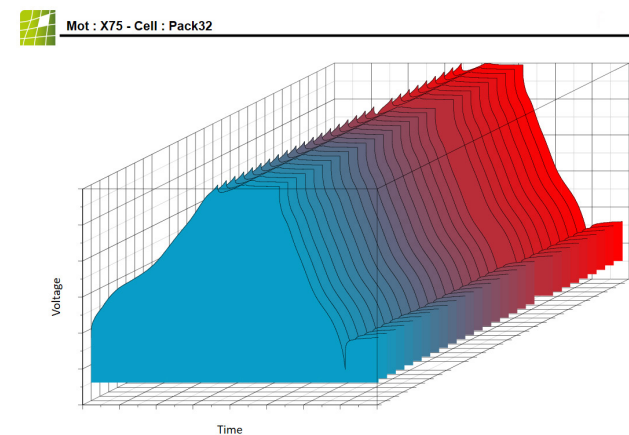
Data visualization, analysis and formatting are not only essential but also time consuming. Manpower should be dedicated to data analysis and not to its preparation. It is challenging to find a software with a quick data overview full of insight.

To facilitate the process and decision making, teams have to work together, and for this a common workflow should help to visualize, analyze and share. How to establish the correct data analysis environment in your company?

“Focus on your analysis, we handle the data”

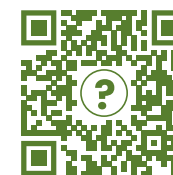
The solution:

UniPlot™ was developed to visualize and analyze data. With only a few mouse clicks, you can transform your data into 3D surface maps with color zones, contour maps with color fill, or plot 2D data into diagrams with several axes. Text objects, scanned photos and other drawing and labeling elements can be easily inserted into the document.



Data can be processed interactively or automated for repetitive tasks or analysis. UniPlot™ offers an efficient and powerful programming language. It enables the user to add new functions to the user interface, to execute complex mathematical data analysis, to import specially formatted data files or to automatically produce complete documentations.

You still have a doubt ?
Here are 20 reasons why
to switch to UniPlot™:



Technical Data

General	UNIPILOT can be fully automated and adapted to the user's needs. Interactive data and plots manipulation. UNIPILOT supports various language (English, German, Russian, Japanese, Chinese) Extensive list of export format
Data handling	Extensive list of data format compatibility From simple to complex data distribution <ul style="list-style-type: none">Import time signals (1D data).Import x/y data curves (2D data).Import irregularly distributed 3D data.Import equidistantly distributed matrix data.Import non-equidistantly distributed matrix data. Easy management of various sampling frequency Data files synchronization Add, transform channels using the advanced formula interpreter. Signals response time correction Create Excel Reports. ASAM-ODS, SQLite, PostgreSQL, MariaBD, cURL
Diagrams	Multi X-axis and Multi Y-axis Diagrams 1D, 2D, 3D, Polar, Web, Bar, Pie, PV diagrams are available Wide range of editable features (markers, lines, curve area...) 3D engine for 3D map generation Filters and quick functions (smooth, integral, derivative, correction factors...) Extensive isoline feature for 3D plot (automatic distribution, area computation...)
Drawing objects	Draw lines, arrows, rectangles and ellipses. Multi-line text objects with centered, right or left justification. Grouping drawing objects to a single unit. Insert pictures or videos to your reports OLE server and container. Insert UniPlot diagrams into other Windows applications or insert graphics, tables, text etc. into UniPlot documents. With LaTeX insert formula in your reports
UniScript	UniScript is a matrix orientated interpreter with a C-like syntax. Add new functions to UniPlot. Automate repetitive tasks. Analyse and transform data. Organize UniPlots menu as you wish Work on Linear Algebra, Trigonometry, Frequential Analysis, Ordinary Differential Equations, Fitting Splines, Non-Linear Regression, Complex Numbers ... Flow control (for, while, break etc...) C or C++ DLL's can be loaded to UniPlot UniPlot is an ActiveX Server, Active X Client, OLE Server